

Mount as Drive using TonidoDrive

 Pls. note: webDAV Not supported anymore.

REQUIREMENTS:

1. You will need a [TonidoPro](#) subscription or have a [TonidoPlug](#) Hardware device
2. TonidoDrive can be used only for Windows

PLEASE NOTE:

1. If you are using a TonidoPlug and want to access your files in your LAN, it is more efficient to connect to the USB drive as a network share. See [TonidoPlug: Access as a Drive](#)
2. For Operating Systems other than Windows, please go to [Access Files As Local Drive](#)

Access your Tonido server files like you would access any other files your hard disk on your Windows based PC.

TonidoDrive is fully secure and is built using a robust Windows filesystem driver so you can access your files with confidence.

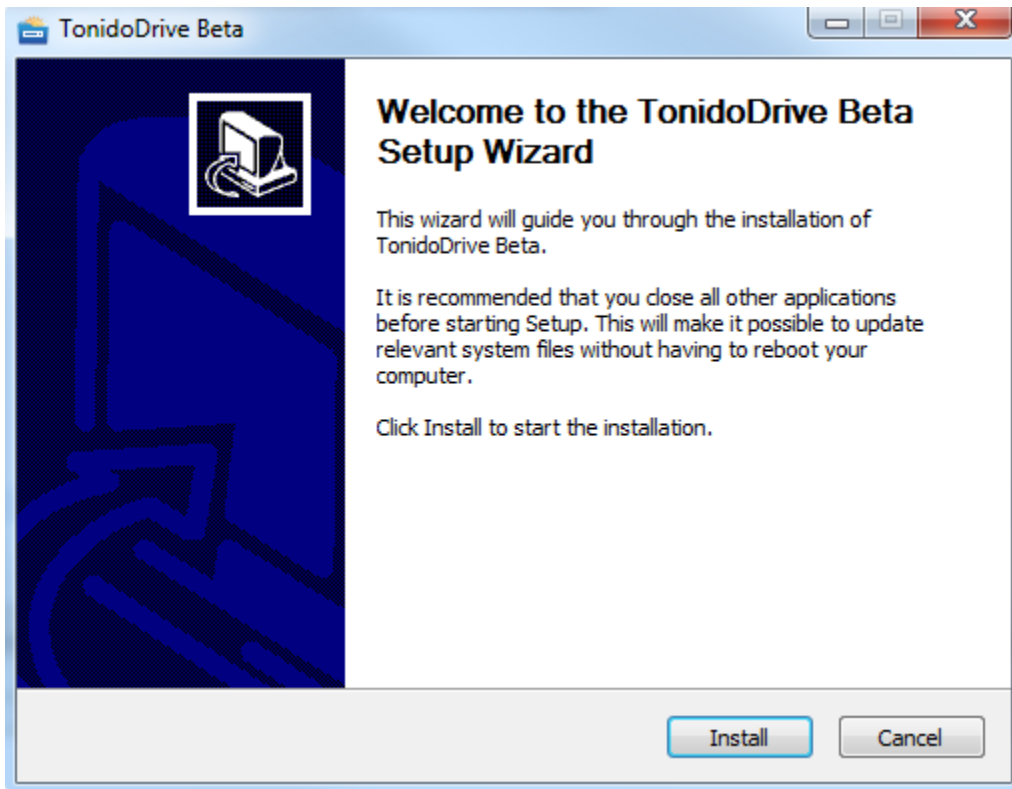
Please follow the steps below to install and use TonidoDrive:

Install TonidoDrive

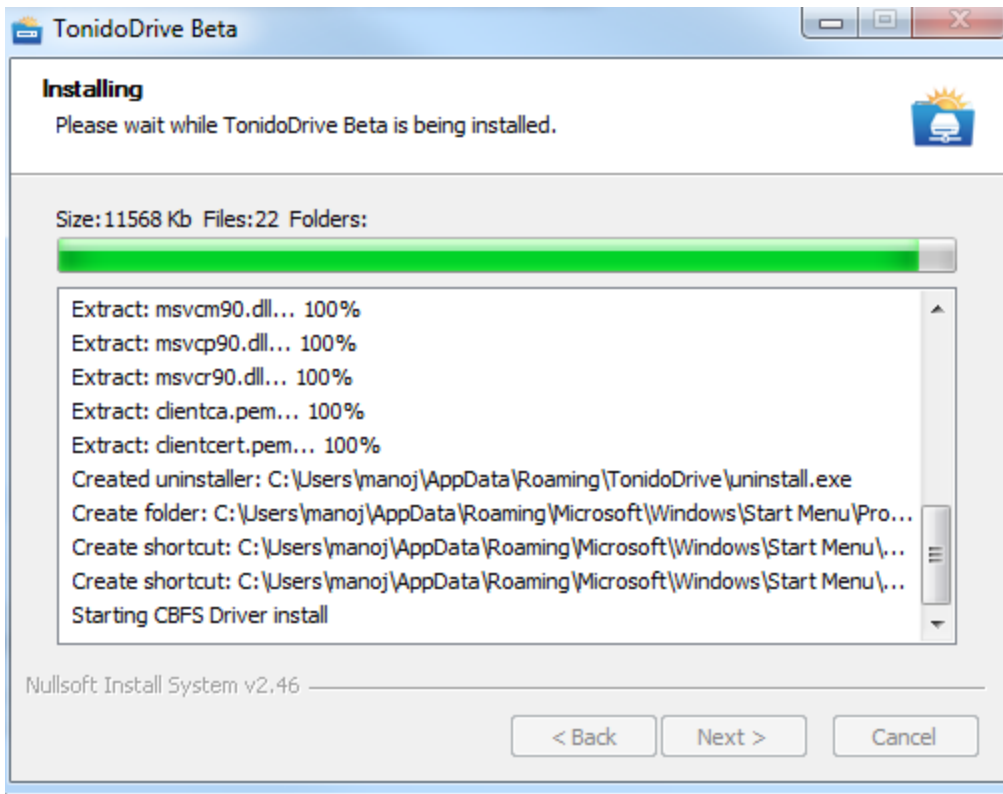
Download Tonido Drive from: http://www.tonido.com/app_drive_home.html

Use the following screenshots for reference for Installation:

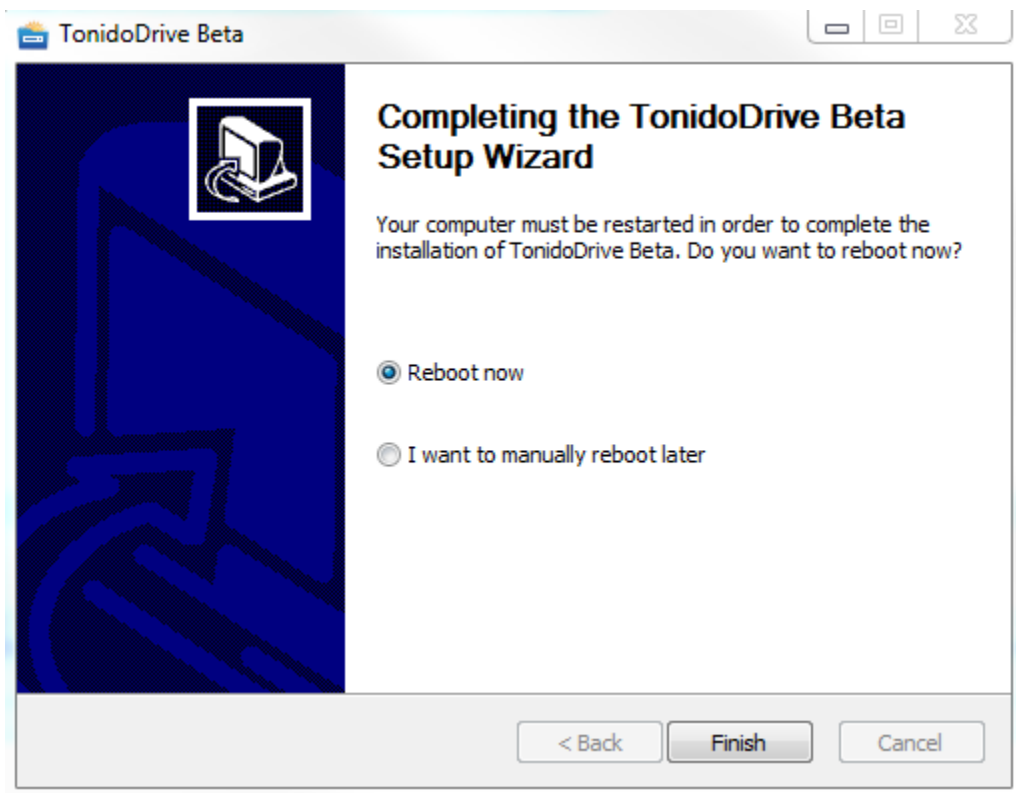
- 1) Click on the download TonidoDrive execution file:



- 2) Installation progress:



3) Reboot after installation:



Settings for Map as Local Drive in Tonido

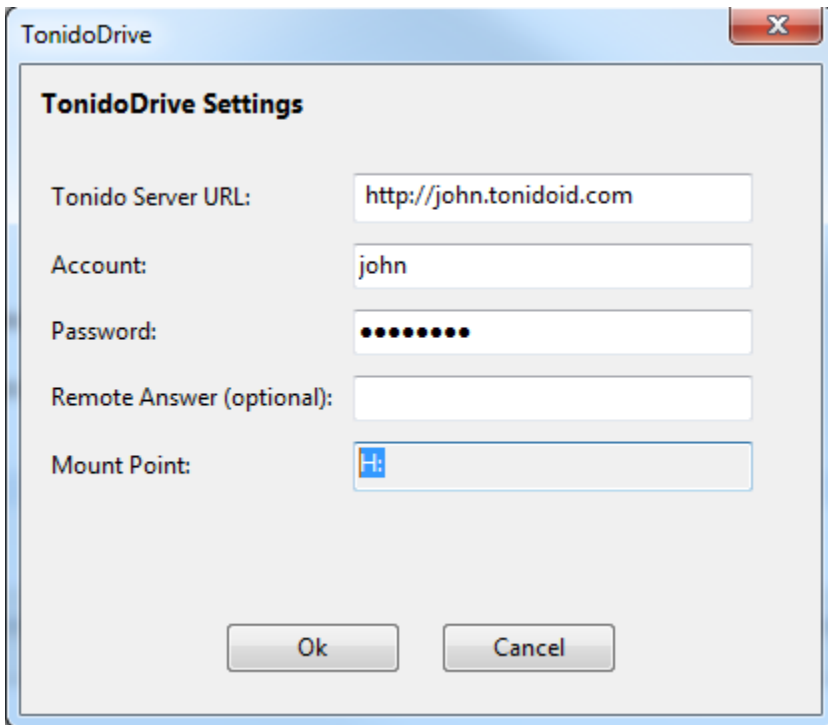
To map your Tonido server, simply enter your Tonido account information, for example:

1) Entering Tonido account information:

URL: <http://john.tonidoid.com/>

User: john

Password: <Tonido account password>



TonidoDrive Settings

Tonido Server URL:

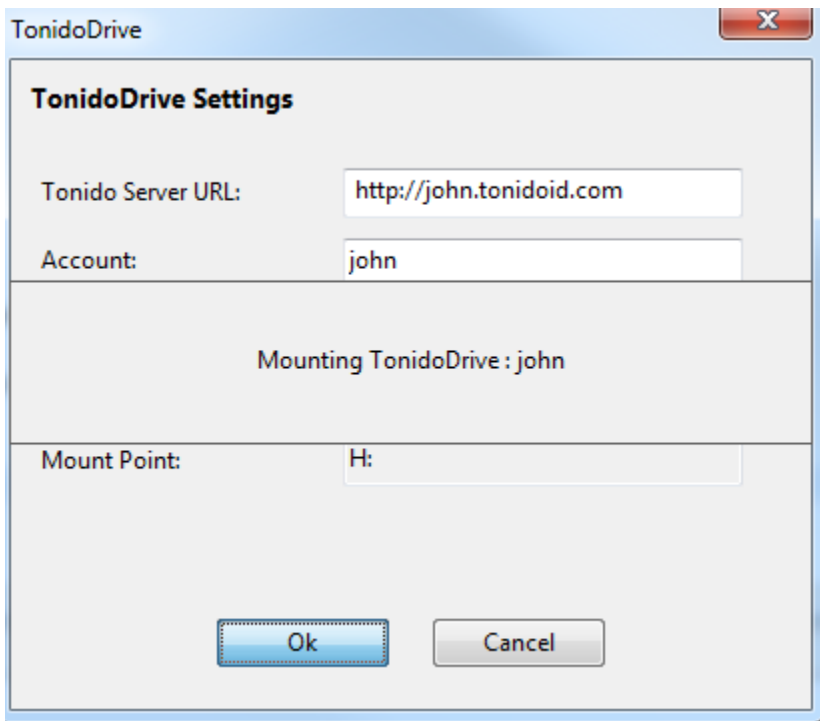
Account:

Password:

Remote Answer (optional):

Mount Point:

2) When you have proper Tonido credentials entered, click Ok:



TonidoDrive

TonidoDrive Settings

Tonido Server URL:

Account:

Mounting TonidoDrive : john

Mount Point:

3) TonidoDrive automatically picks up a available mount point. For example, in the above screenshot, TonidoDrive picked "H:" to be the mount point.

Hard Disk Drives (3)

SW_Preload (C:) 13.4 GB free of 137 GB

Lenovo (Q:) 3.61 GB free of 9.76 GB

SERVICEV003 (S:) 695 MB free of 1.46 GB

Devices with Removable Storage (1)

DVD RW Drive (D:)

Network Location (1)

Tonido (H:) 1.99 GB free of 1.99 GB

4) Now you have your Tonido server mapped as a drive using TonidoDrive. You can add/delete/edit files that is on your Tonido server.

When using Port Forwarding

If you are using port forwarding, please make sure to provide the correct port number